



motion control

All Electric Actuators for Extreme Environments

Safety
Reliability
Competence



SSEAC®

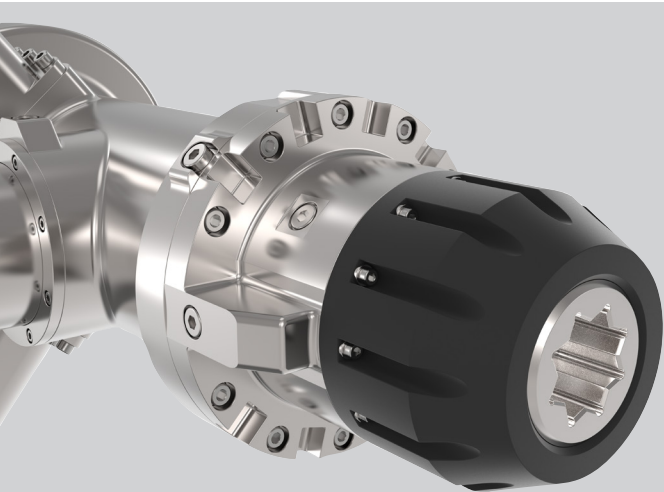
Subsea Electric Actuator

SUBSEA SYSTEM EXPERTISE

The SSEAC® is the first all-electric valve actuator from WITTENSTEIN motion control for subsea applications in the oil and gas industry. The SSEAC® has been developed to electrically actuate Choke, Gate, Control and Ball valves rated to 3,000 m water depth.

WITTENSTEIN motion control began subsea deployments in 2001 and now has over 200 systems qualified and installed in the UKCS, NCS, Brazilian and Australian waters.

To improve reliability and enhance safety WITTENSTEIN subsea electric actuators have implemented 'finger printing' routines and partial stroke testing, that can deliver valve condition back to surface for review and analysis.



Perfectly positioned and uniquely driven.

One Source – Customized Solutions



BENEFITS

- Long step out and deep water capable
- Continuous condition monitoring
- Can be used on all valve types
- Fast acting and High Torque versions

- API Class 4 bucket drop in
- Single or Dual channel
- Max Torque 2,700 Nm
- Single or 3-phase input power
- High availability
- Optional dual sealing concept
- 24 VDC to 400 VDC & 400 VAC variants



Contact

WITTENSTEIN, Inc.
1249 Humbracht Circle
Bartlett, IL 60103
USA

Tel. +1 630 540-5300
info@wittenstein-us.com

WITTENSTEIN – one with the future

www.wittenstein-us.com