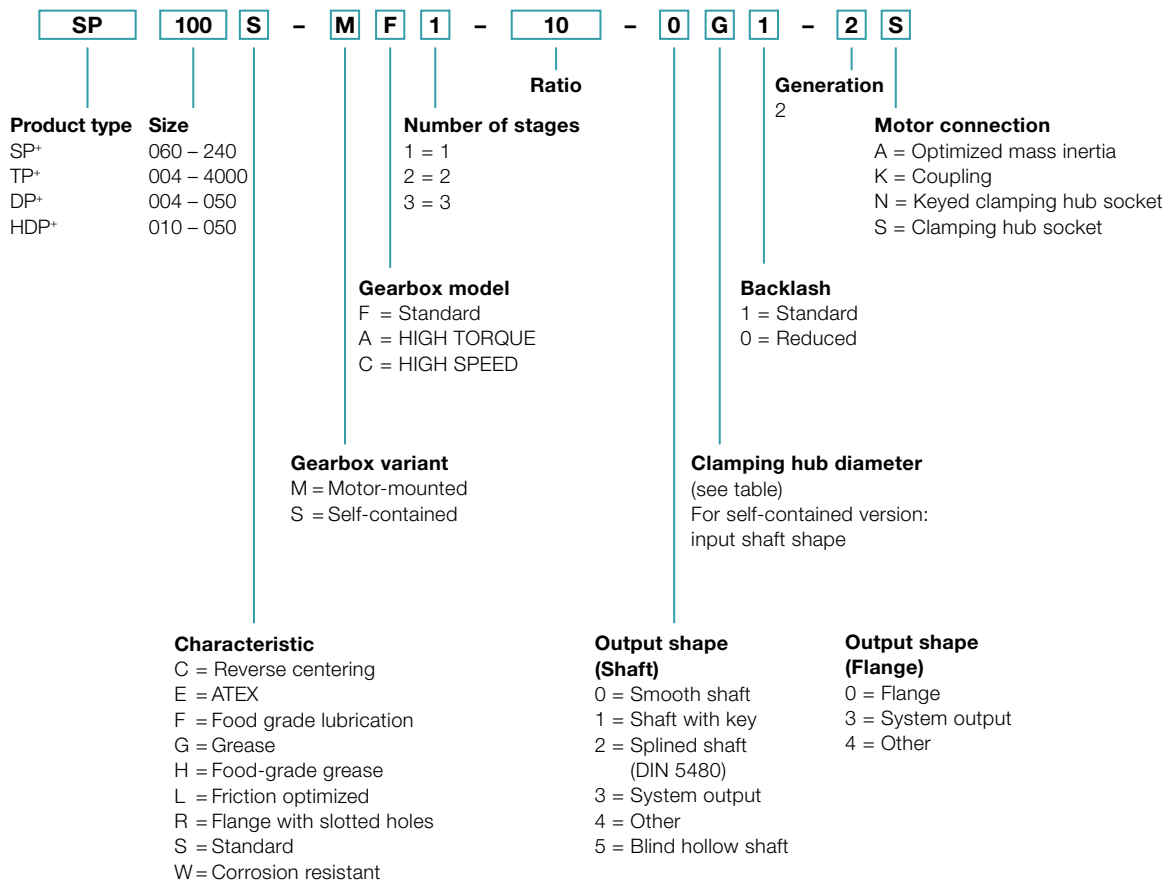


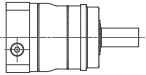
# Ordering code – Planetary gearbox



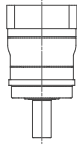
# Mounting positions and clamping hub diameters

Clamping hub diameter  
(see technical data sheet for possible diameters)

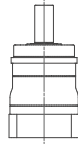
B5  
Horizontal



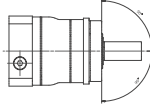
V1  
Output vertical downwards



V3  
Output vertical upwards



S  
Can be tilted  $\pm 90^\circ$   
from a horizontal position



| Code letter | mm | Code letter | mm |
|-------------|----|-------------|----|
| B           | 11 | I           | 32 |
| C           | 14 | K           | 38 |
| E           | 19 | M           | 48 |
| G           | 24 | N           | 55 |
| H           | 28 | O           | 60 |

Intermediate sizes possible using bushings with a minimum thickness of 1 mm.

**For information purposes only – not required when placing orders!**

**Exceptions:**

- The mounting position of TP+ 2000 / 4000 must be specified.
- DP+ / HDP+ products are designed for mounting position B5 as standard!

If the mounting position is different, contact WITTENSTEIN alpha without fail.