



WITTENSTEIN

alpha

cymex[®] 5

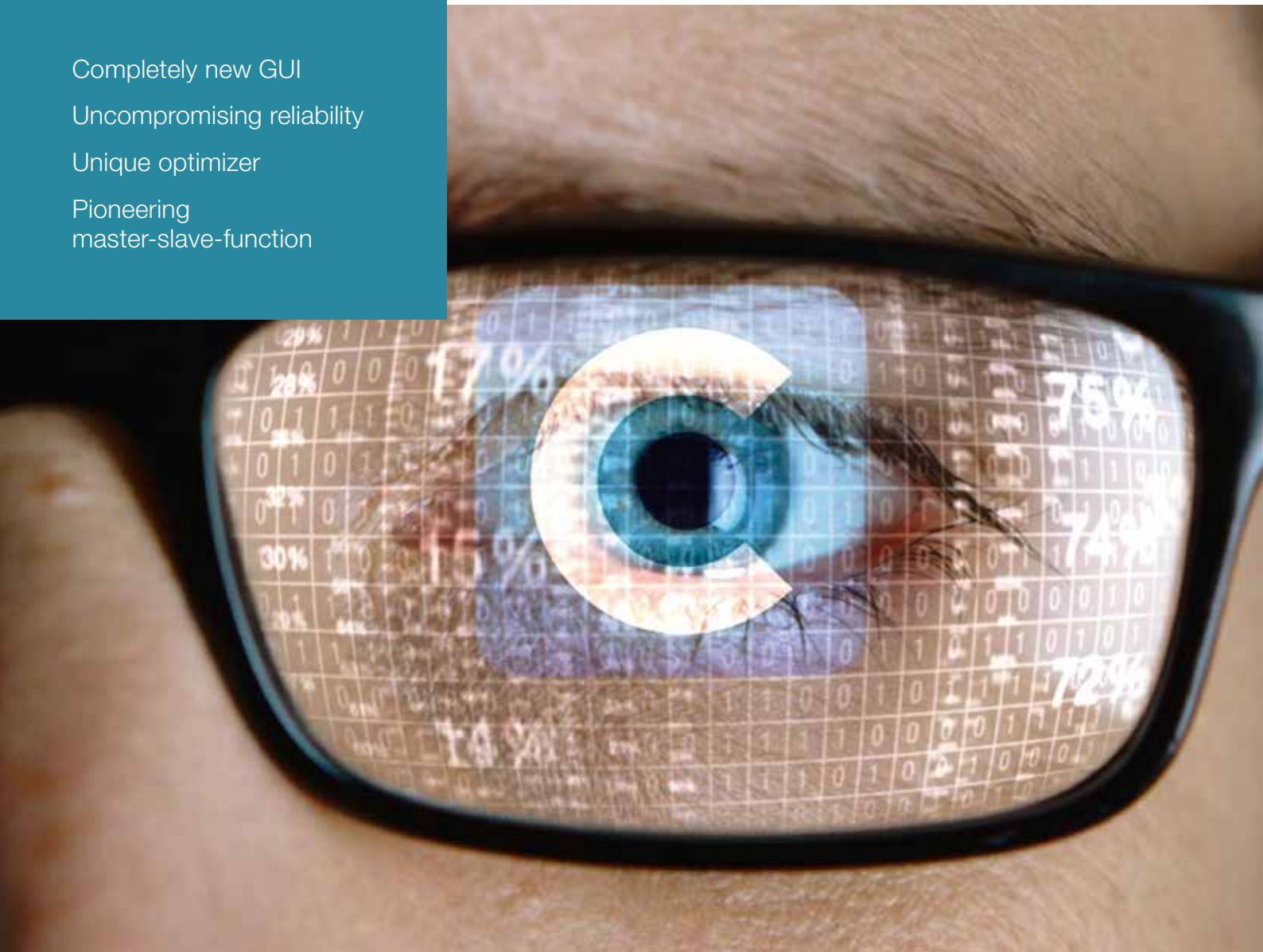
Calculate on the Best

Completely new GUI

Uncompromising reliability

Unique optimizer

Pioneering
master-slave-function





cymex[®]5



The new top-performance
sizing software

cymex[®] 5 sets a new benchmark

WITTENSTEIN alpha's engineers have fundamentally redesigned the cymex[®] sizing software. The result is a sizing tool that sets benchmarks in every respect.

Thanks to cymex[®] 5, the entire drive train (application + transformation + gearhead + motor) can now be sized and designed quicker, more easily and more reliably than ever before. Its calculations are considerably simplified by predefined standard applications. Optimally sized and more efficient motors are achieved by abstracting all important influencing factors.

Free download

The basic version of the cymex[®] 5 sizing software can still be downloaded free of charge.

Have we aroused your curiosity?



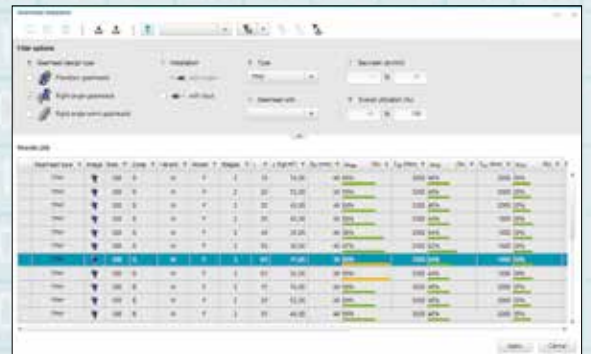
www.wittenstein-cymex.com

cymex[®] 5:



cymex[®] 5 can define any number of axes at once

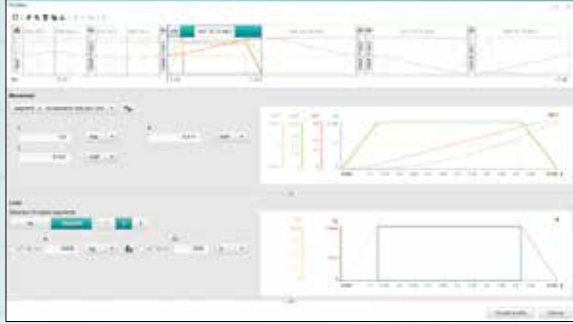
Unlike other sizing tools, cymex[®] 5 can define any number of axes simultaneously. A time saving of up to 60% is now possible when calculating variants.



cymex[®] 5 has a huge database

More than 14,000 motors from fifty leading manufacturers are stored in the sizing tool. Regularly updated, always at the cutting edge. More than 8000 WITTENSTEIN alpha gearhead variants and 200 combinations of linear systems with all relevant technical specifications are likewise available.

Calculate on the Best

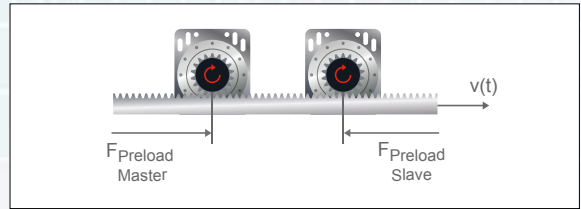


cymex® 5 has an intuitive Profiler

The new Profiler is extremely user friendly. Motion and load profiles are clearly presented and can be customized to suit any requirements. Detailed descriptions are provided of all input parameters.

cymex® 5 has a fundamentally new master-slave function*

The master-slave function lets you map two electrically preloaded drives. By tensioning each other, the master and slave eliminate backlash from the drive train and increase the machine's stiffness. Significantly higher dynamics are achieved as a result.



cymex® 5 is ultra-fast

cymex® 5 means 90 percent less work compared to existing software solutions. You save a lot of precious time.

cymex® 5 is uncompromisingly reliable

Each user selects the components that are exactly right for their application based on the required load. Drives optimized for specific loads and motions are designed with unerring reliability – with information, warnings and error messages if individual components are overloaded, for example.





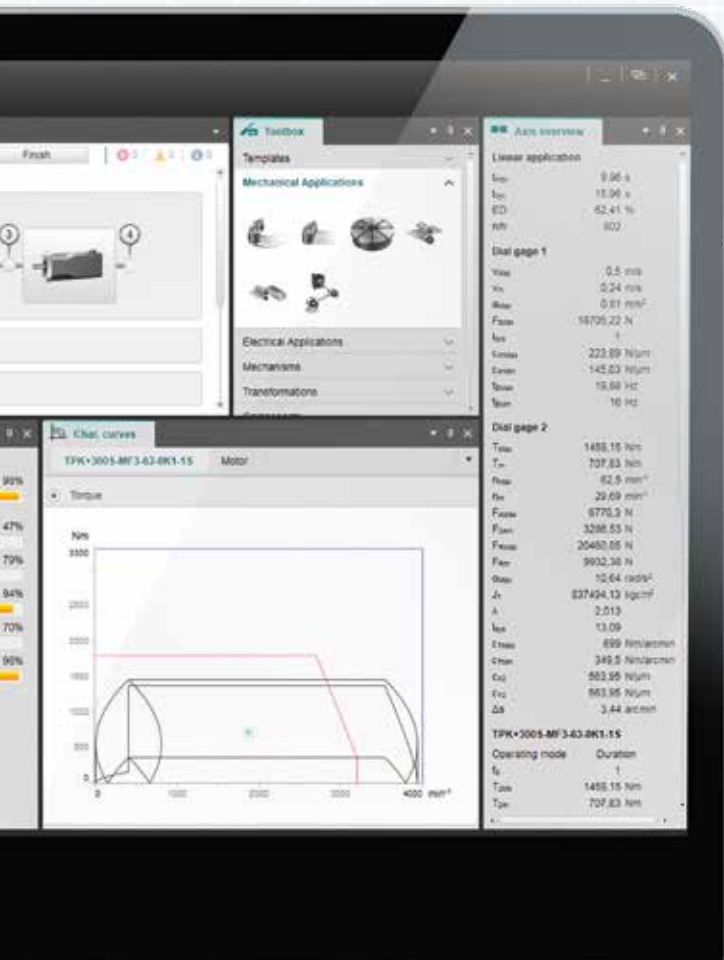
cymex® 5 has a unique optimizer*

The complete drive train can be optimized based on the motor data. This function provides recommendations for optimizing the selected gearhead during the design phase. You profit from more efficiency and reliability. Downsizing potential is identified to help reduce the cost, and your gearhead is neither oversized nor undersized.



cymex® 5 has an intuitive GUI

The new, more modern graphical user interface provides optimal flexibility: it can be extended with various optional windows, for example for measurement curves, load diagrams or freely positionable toolbars. You can also save your personal look & feel for follow-up projects.



cymex® 5 is international

The software is available in eleven different languages: English, German, Spanish, Italian, Chinese, Japanese, French, Turkish, Russian, Portuguese and Dutch. International cooperation is simplified enormously.

cymex® 5 is close cooperation with customers

One reason why the new sizing tool is so good is because WITTENSTEIN alpha cooperates very closely with its customers. Their experiences served as valuable input when the new software was developed.

cymex® 5 is the outcome of 30 years of experience

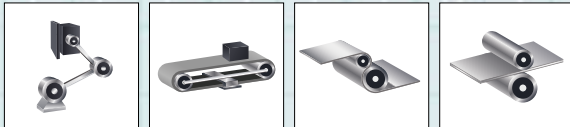
WITTENSTEIN alpha can look back on more than three decades of experience in drive technology. This accumulated knowledge is your guarantee of unprecedented design reliability.

First users thrilled by cymex® 5



cymex® 5 provides detailed documentation

After comparing the geometry, cymex® 5 generates calculation documentation and data sheets for the gearhead and motor on request. You can also display the 2D and 3D CAD data of selected components.



cymex® 5 enables precise simulations of motions and loads

The new software offers many opportunities to customize the design of your drive train. The following applications are now integrated over and above those already implemented in cymex® 3: shifted crank, conveyor, center winder and feed roll.

*Premium function, available on request.



Max Windholz
Senior Manager Standardization
SOMIC Verpackungsmaschinen GmbH & Co. KG

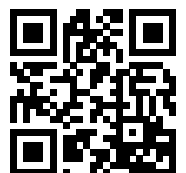
“I like the cymex® 5 graphical user interface a lot. You get used to it very fast. It’s very intuitive.”

„cymex® 5 is efficiency engineering.“



Felix Zeeb
Mechanical Engineering
OPTIMA consumer GmbH

Find out what other users have to say about the new cymex® 5:





WITTENSTEIN alpha GmbH · Walter-Wittenstein-Str. 1 · 97999 Igersheim · Germany · Phone +49 7931 493-0 · cymex@wittenstein.de

WITTENSTEIN alpha – intelligent drive systems

www.wittenstein-alpha.com
www.wittenstein-cymex.com

