



## cymex<sup>®</sup> 5: The perfect drive sizing software

**WITTENSTEIN alpha GmbH will take advantage of the Hannover Messe 2016 to unveil cymex<sup>®</sup> 5, the new, multifunctional software that enables bespoke drive trains to be designed reliably, economically and energy efficiently. The software features an intuitive, customizable user interface, allowing any number of alternative designs to be elaborated simultaneously. cymex<sup>®</sup> 5 has access to around 14,000 motor versions from more than 50 different manufacturers for this purpose as well as more than 8000 WITTENSTEIN alpha gearheads and 200 combinations of WITTENSTEIN linear systems. The bottom line: a time saving for designers of up to 60% with cymex<sup>®</sup> 5 when calculating possible variants.**

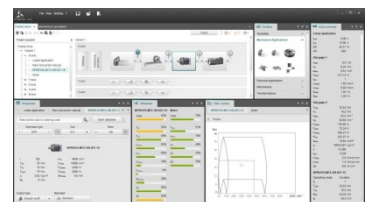
The software is also unique in that it ships with an “Optimizer”, which identifies downsizing potential and thus guarantees the highest possible energy efficiency and power density throughout the drive train.

### **Any number of axes configured in one project**

Motion profile, load case, mechanics – users can choose between several possible entry levels when they embark on a design project. The software enables precise simulations of motions and loads because all a drive’s most common basic applications as well as the most frequent movement kinematics and machine mechanisms can be selected directly. A crank, telescope and centre winder are now integrated over and above the applications already implemented in cymex<sup>®</sup> 3. Other variants can be configured in a modular way. cymex<sup>®</sup> 5 allows any number of axes to be defined at once. It also now permits several axes and variants to be analyzed and evaluated simultaneously in a single project – a time saving for designers of up to 60%. What’s more, each user can customize their own GUI layout with cymex<sup>®</sup> to create a personal look & feel.

April 26, 2016

High-tech products made by WITTENSTEIN fly into space and win Formula One races. Intelligent drive systems – from the world’s smallest high-performance servo drive to the latest state of the art in medical technology – are developed, produced and marketed by a team of around 1900 employees. With a blend of dedication and enthusiasm, we set benchmarks – every day – worldwide.



cymex<sup>®</sup> 5: new, multifunctional drive sizing software

### **WITTENSTEIN AG**

Walter-Wittenstein-Straße 1  
97999 Igersheim · Germany

**Contact: Sabine Maier**  
Press Officer  
Tel. +49 7931 493-10399  
Fax +49 7931 493-10301  
E-Mail: [sabine.maier@wittenstein.de](mailto:sabine.maier@wittenstein.de)  
[www.wittenstein.de](http://www.wittenstein.de)

### **End-to-end sizing and design with full documentation**

To support the design of the drive train, cymex<sup>®</sup> 5 has access to a regularly updated database listing around 14,000 motor versions from more than 50 different manufacturers plus more than 8000 WITTENSTEIN alpha gearheads and 200 combinations of WITTENSTEIN linear systems. After comparing the geometry, the software derives bespoke drive configurations and automatically suggests suitable attached components. At the end of the sizing process, the user can generate the full calculation documentation directly, create data sheets for the gearhead and motor and display 2D or 3D CAD component data.

### **“Optimizer” improves energy efficiency and power density in the drive train**

cymex<sup>®</sup> 5 is shipped with an optional “Optimizer” that is the only one of its kind to date for sizing software. This tool identifies downsizing potential – especially in machines, axes and powertrains that have already been configured. A machine’s existing controller parameters, such as the current or voltage profile, can be read out for this purpose and imported into cymex<sup>®</sup> 5 in order to optimize the train’s energy efficiency. Furthermore, the Optimizer knows, for example, whether a smaller sized motor / gearhead unit could be used instead without compromising performance. Undersized drives can be adapted with the help of the Optimizer’s recommendations.

### **Drive design without language barriers**

cymex<sup>®</sup> 5 can be used in any of eleven European and Asian languages. The calculation documentation and product data sheets, too, reflect this impressive linguistic diversity.

User friendliness, versatility, internationality, downsizing – efficiency engineering with cymex<sup>®</sup> 5.

---

**WITTENSTEIN AG**

Walter-Wittenstein-Straße 1  
97999 Igersheim · Germany

**Contact: Sabine Maier**  
Press Officer  
Tel. +49 7931 493-10399  
Fax +49 7931 493-10301  
E-Mail: [sabine.maier@wittenstein.de](mailto:sabine.maier@wittenstein.de)  
[www.wittenstein.de](http://www.wittenstein.de)

**Photos:**

01\_WITTENSTEIN\_Bedienoberfläche\_individualisiert:

With cymex<sup>®</sup> 5, each user can customize their own GUI layout with optional windows and freely positionable toolbars.

02\_WITTENSTEIN\_cymex5\_Optimizer\_Visualisierung:

The “Optimizer” identifies downsizing potential and permits more energy efficient drive trains.

03\_WITTENSTEIN\_cymex5\_Arbeitsplatz;

04\_WITTENSTEIN\_cymex5\_Arbeitsplatz:

cymex<sup>®</sup> 5 makes the designer’s work much easier because several axes and variants can now be analyzed and evaluated simultaneously in a single project.

Texts and photographs in printable quality can be downloaded from [presse.wittenstein.de](http://presse.wittenstein.de).

**WITTENSTEIN AG – one with the future**

With around 1900 employees worldwide and sales of approximately €300\* million in 2015/16 (\*provisional figure), WITTENSTEIN AG enjoys an impeccable reputation for innovation, precision and excellence in the field of mechatronic drive technology – not just in Germany but internationally. The group comprises eight pacesetting Business Units with separate subsidiaries for servo gearheads, servo actuator systems, medical technology, miniature servo units, innovative gearing technology, rotary and linear actuator systems, nano technology and electronic and software components for drive technologies. Through its 60 or so subsidiaries and agents in approximately 40 countries, WITTENSTEIN ([www.wittenstein.de](http://www.wittenstein.de)) is additionally represented in all the world's major technology and sales markets.

---

**WITTENSTEIN AG**

Walter-Wittenstein-Straße 1  
97999 Igersheim · Germany

**Contact: Sabine Maier**  
Press Officer  
Tel. +49 7931 493-10399  
Fax +49 7931 493-10301  
E-Mail: [sabine.maier@wittenstein.de](mailto:sabine.maier@wittenstein.de)  
[www.wittenstein.de](http://www.wittenstein.de)