

Flange shafts – Flexible in design



More design freedom for the output:
Our flange shafts provide you with
made to measure output shafts, es-
pecially adapted for TP⁺, TPK⁺, TK⁺
and TPC⁺ flange gearheads:

- Flexible shaft diameter
- Can be adapted to your output components
- Customized options possible

Your benefits

- Geometrically adapted to the gearhead
- Choice of shaft diameters
- Can also be combined with couplings
- Other options available on request (material, geometry)

Your benefits

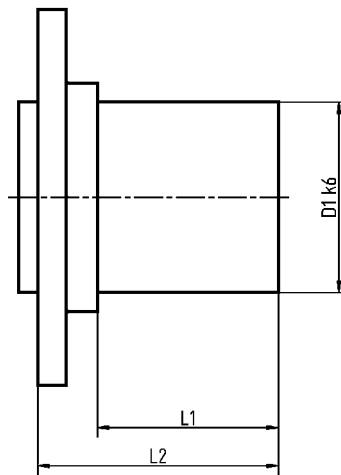
- Simple selection
- Greater design freedom
- A flexible solution for your drive

Quick flange shaft selection

Gearhead TP*/ TPK*/ TK*/ TPC*	Diam. of shaft D1 option A [mm]	Order code	Diam. of shaft D1 option B [mm]	Order code	Effective shaft length L1 [mm]	Overall length L2 [mm]
004 MF	16	FLW TP 004-S-016-023-033	22	FLW TP 004-S-022-023-033	23	033
010 MF	22	FLW TP 010-S-022-030-041	32	FLW TP 010-S-032-030-041	30	041
010 MA	22	FLW TP 010-A-022-042-065	32	FLW TP 010-A-032-042-065	42	065
025 MF	32	FLW TP 025-S-032-038-051	40	FLW TP 025-S-040-038-051	38	051
025 MA	32	FLW TP 025-A-032-050-079	40	FLW TP 025-A-040-050-079	50	079
050 MF	40	FLW TP 050-S-040-038-054	55	FLW TP 050-S-055-038-054	38	054
050 MA	40	FLW TP 050-A-040-062-095	55	FLW TP 050-A-055-062-095	62	095
110 MF	55	FLW TP 110-S-055-052-073	75	FLW TP 110-S-075-052-073	52	073
110 MA	55	FLW TP 110-A-055-081-119	75	FLW TP 110-A-075-081-119	81	119
300 MF	90	FLW TP 300-S-090-123-150			123	150
300 MA	90	FLW TP 300-A-090-123-150			090	150

Technical characteristics:
 Yield strength $R_p: \leq 245\text{N/mm}^2$
 Tolerance k6
 Surface roughness $R_z: \leq 25$

The flange shaft and fastening screws are not included with the gearhead.
 For more precise information on mounting, please see the gearhead operating instructions.



Schematic diagram:
 D1 = Shaft diameter
 L1 = Effective shaft length
 L2 = Overall length

